

Jet-Air
Cool, Warm & Collected

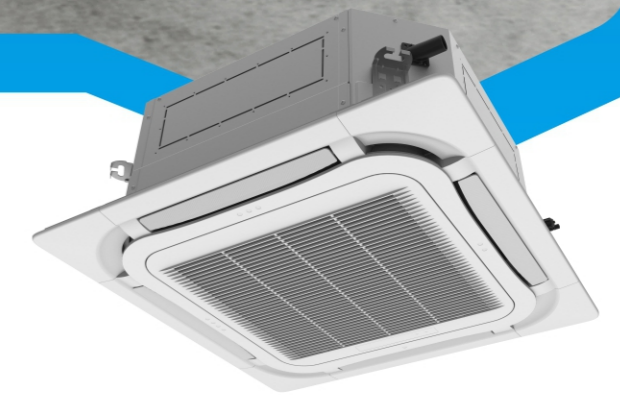


Jet-Air
Cool, Warm & Collected



- DC inverter compressor and DC inverter fan motor gives high efficiency and comfort.
- Wide capacity from 12 000 to 60 000 Btu/h, single phase and three phase.
- Indoor air flow from 650M3/h to 2000M3/h (high fan speed)
- Max pipe length up to 65M (48000 to 60000 Btu/h models)
- BMS connection is available upon request.

Inverter Cassette



Due to **JASA** policy of constant improvement, specifications are subject to change without prior notice.

Remarks: Cooling capacities are based on indoor air temp. 27°C DB, 19°C WB and outdoor air temp. 35°C DB, 24°C WB. The above specifications are subject to change without prior notice for product improvement.

E.&O.E.



Proudly distributed by

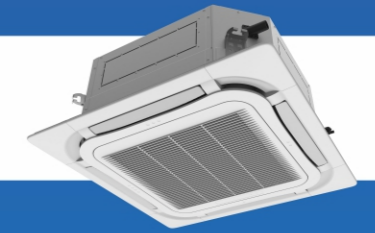
JASA
Smart Home





Inverter Cassette

Technical Specifications



Model	Indoor		JASA-Ca-H12A4/ASI	JASA-Ca-H18A4/ASI	JASA-Ca-H24A4/ASI	JASA-Ca-H36A4/ASI	JASA-Ca-H48A4/ASI	JASA-Ca-H48A5/ASI	JASA-Ca-H60A4/ASI	JASA-Ca-H60A5/ASI		
	Outdoor		JASA-H12A4/ASI	JASA-H18A4/ASI	JASA-H24A4/ASI	JASA-H36A4/ASI	JASA-H48A4/ASI	JASA-H48A5/ASI	JASA-H60A4/ASI	JASA-H60A5/ASI		
Power Supply	V~,Hz,Ph		220~240,50,1	220~240,50,1	220~240,50,1	220~240,50,1	220~240,50,1	220~240,50,1	380~415,50,3	220~240,50,1	380~415,50,3	
Capacity	Cooling	Btu/h	11900	17000	23800	34500	47800	47800	51200	51200		
		Kw	3.50	5.00	7.00	10.10	14.00	14.00	15.00	15.00		
	Heating	Btu/h	13600	19100	27200	37500	51200	51200	58000	58000		
		Kw	4.00	5.60	8.00	11.00	15.00	15.00	17.00	17.00		
Electric Data	Rated Cooling Power Input		Kw	1.80	2.20	3.68	3.70	5.60	5.80	6.20	6.20	
	Rated Heating Power Input		Kw	1.80	2.20	3.68	3.70	5.40	5.60	5.80	5.80	
	Rated Cooling Current		A	9.0	9.5	16.50	17.0	26.0	11.0	30.0	13.0	
	Rated Heating Current		A	9.0	9.5	16.50	17.0	26.0	10.0	28.0	11.0	
Performance	EER/COP		W/W	3.40/3.64	3.21/3.50	3.21/3.64	2.97/3.67	2.59/3.41	2.80/3.41	2.78/3.62	2.88/3.62	
Indoor Unit	Indoor Air Flow		m ³ /h	650/580/480/400	700/580/480/400	1250/1150/950/850	1500/1450/1350/1200	1800/1700/1500/1300	1800/1700/1500/1300	2000/1900/1600/1400	2000/1900/1600/1400	
	Noise Level		dB(A)	41/37/35/31	44/39/35/31	47/45/41/39	50/48/46/42	51/49/46/42	51/49/46/42	54/52/50/48	54/52/50/48	
	Dimension (W×D×H)	Net(Body)		mm	570×570×265	570×570×265	840×840×200	840×840×240	840×840×290	840×840×290	840×840×290	
		Packing(Body)		mm	698×653×295	698×653×295	943×923×245	963×963×325	963×963×379	963×963×379	963×963×379	
		Net(Panel)		mm	620×620×47.5	620×620×47.5	950×950×52	950×950×52	950×950×52	950×950×52	950×950×52	
		Packing(Panel)		mm	701×701×125	701×701×125	1033×1038×112	1033×1038×112	1033×1038×112	1033×1038×112	1033×1038×112	
	Weight	Net/Gross(Body)		Kg	17.0/22.0	17.0/22.0	23.0/30.0	31.0/38.0	33.0/41.0	33.0/41.0	36.0/44.0	36.0/44.0
		Net/Gross(Panel)		Kg	3.0/4.5	3.0/4.5	6.0/9.5	6.0/9.5	6.0/9.5	6.0/9.5	6.0/9.5	6.0/9.5
Outdoor Unit	Noise Level		dB(A)	51	55	55	55	59	59	60	60	
	Dimension (W×D×H)	Net		mm	818×302×596	818×302×596	892×340×698	920×370×790	940×460×820	940×460×820	940×460×820	
		Packing		mm	948×420×645	948×420×645	1029×458×750	1083×488×855	1083×573×973	1083×573×973	1083×573×973	
	Weight		Net/Gross		Kg	38.0/41.0	41.0/44.0	53.0/57.0	61.0/66.0	92.0/104.0	96.0/108.0	100.0/112.0
Refrigerant Type			g	R410A/1000	R410A/1250	R410A/2000	R410A/2450	R410A/3700	R410A/3700	R410A/3800	R410A/3800	
Refrigerant Pipe	Liquid Side		Inch	1/4"	1/4"	3/8"	3/8"	3/8"	3/8"	3/8"	3/8"	
	Gas Side		Inch	3/8"	1/2"	5/8"	5/8"	5/8"	5/8"	5/8"	5/8"	
	Max. Length		m	20	25	40	40	65	65	65	65	
	Max. Height		m	15	15	20	20	25	25	25	25	

Indoor Dimension									
Model	A	B	C	D	E	F	G	H	I
JASA-Ca-H12A4/ASI	620	580	570	505	550	265	140	530	530
JASA-Ca-H18A4/ASI	620	580	570	505	550	265	140	530	530
JASA-Ca-H24A4/ASI	950	870	840	680	780	200	135	-	-
JASA-Ca-H36A4/ASI	950	870	840	680	780	240	135	-	-
JASA-Ca-H48A4/ASI	950	870	840	680	780	290	135	-	-
JASA-Ca-H60A4/ASI	950	870	840	680	780	290	135	-	-

Outdoor Dimension							
Model	A	B	C	D	E	F	G
JASA-H12A4/ASI	818	378	596	550	348	887	302
JASA-H18A4/ASI	818	378	596	550	348	887	302
JASA-H24A4/ASI	892	396	698	560	364	952	340
JASA-H36A4/ASI	920	427	790	610	395	1002	370
JASA-H48A4/ASI	940	530	820	610	486	-	460
JASA-H48A5/ASI	940	530	820	610	486	-	460
JASA-H60A4/ASI	940	530	820	610	486	-	460
JASA-H60A5/ASI	940	530	820	610	486	-	460

